

Water-Brake Dynamometer Test Stand Model PTD-EMTS250



Testing Applications

Designed for load testing of small electric motors up to 250 HP



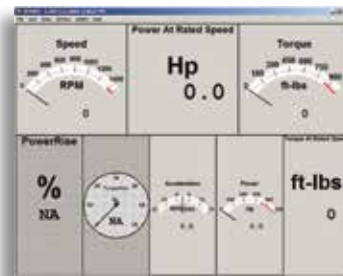
- **Compact** and **easy to set-up** with an **adjustable** lift table
- **Integrated** 30-gallon (114 L) **water storage tank**
- **Variable Frequency Drive** pump for **precise** load control
- **Advanced control unit** with software provides **speed, torque, and power data**

The Model PTD-EMTS250 is a self-contained unit offering exceptional electric motor load testing capabilities and features an adjustable lift table for easy motor placement. The test stand has 6 swivel-locking casters for easy positioning within a test area. A durable water absorber, automatic load control, and an integrated cooling system allow for continuous-duty testing of motors up to 250 HP.

With the included DPM (Digital Power Meter), the system precisely measures and displays speed, torque, and power. With the DPM, load can be set to allow continuous testing at a constant torque. Torque is controlled by turning a potentiometer which controls the water flow into the absorber through the VFD (Variable Frequency Drive) pump. Measurements are taken directly from the absorber. The DPM also measures peak observed readings for all three measurements. The included Data Logger software, when installed on a computer, also displays torque, HP, RPM, and percent slip in real time and allows data to be graphed, recorded, stored, and printed.

Electric motor power and torque verification has never been easier.

INPUT: 208-240 V, 20 A, Single Phase, 50/60 Hz



Testing Capabilities

RPM	MIN HP	MAX HP	MIN FT-LB	MAX FT-LB
900	1	30	6	175
1200	2	75	12	328
1800	5	200	29	584
3600	10	250	28	365



Design Features

- Variable Frequency Drive pump for precise dynamometer loading
- Adjustable lift table (manual) with 5"-14" (127-356 mm) centerline height adjustment for easy shaft alignment
- Maximum water consumption 10 GAL (38 L) per minute per 100 HP load
- Integrated water holding tank for water recirculation
- ¾" (19 mm) hose connection for fresh water intake, 2" (51 mm) drain pipe connection
- Internal temperature control valve determines when fresh water is needed
- Automatic load control with LED readout of Torque, RPM, HP
- Data Logger software and computer interface included
- Double U-joint drive shaft and shaft guard included
- Rugged steel frame with casters for mobility
- Two Shaft Adaptors
 - Type SK accepts 7/8"-2 1/8" (22-54 mm) shaft bushing
 - Type J accepts 2 3/8"-3 3/8" (60-86 mm) shaft bushing
- Operation/maintenance manual

Dimensions & Weight

83" (2108mm) L x 33" (838mm) W x 49" (1245mm) H;
1300 lbs (590 kgs)

Shipping Size

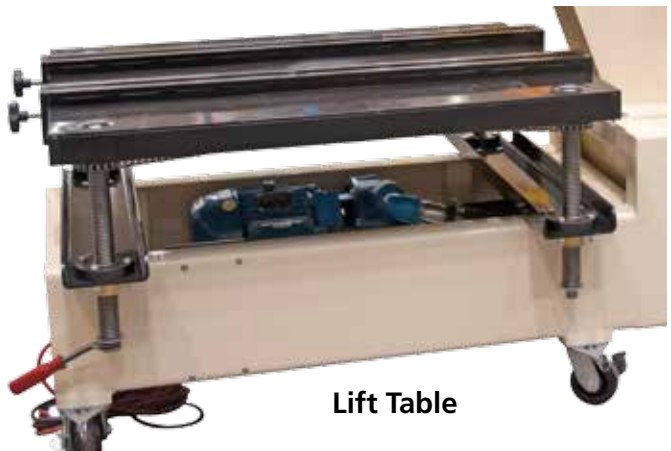
88" (2235mm) L x 44" (1118mm) W x 60" (1524mm) H;
1700 lbs (771 kgs)

Options

- Torque Calibration Weights, 8 and 30 lbs.
- Pedestal for controller



Shaft Adaptors



Lift Table

Other motor testing products PHENIX offers:

- High and Low Power Motor Test Systems
- Core Loss Testers
- Insulation Analyzers
- Microhmmeters
- AC and DC Hipots
- Megohmmeters



PHENIX
TECHNOLOGIES

WORLD HEADQUARTERS

Phenix Technologies, Inc.
75 Speicher Drive
Accident, MD 21520 USA
Ph: +1.301.746.8118
Fx: +1.301.895.5570
Info@phenixtech.com

BRANCH OFFICES

Phenix Systems AG
Riehenstrasse 62A, 4058 Basel, Switzerland
Ph: +41.61.383.2770, Fx: +41.61.383.2771, Info@phenixsystems.com

Phenix Asia
Zhong Cheng Rd, Sec 1, No 177, 2F, Taipei 11148 Taiwan
Ph: +886.2.2835.9738, Fx: +886.2.2835.9879, Info@phenixasia.com

ISO
9001:2008
Compliant

