

Automated Dielectric Breakdown Test Set for Insulating Materials



Testing Applications

Designed to measure dielectric breakdown and dielectric strength of a wide range of solid electrical insulating materials, at commercial power frequencies, within the ASTM D149 and IEC 60243-1 standards as well as other comparable international standards.

Models Available

- 6CC20-0.8/D149
- 6CC50-2/D149
- 6CC100-5/D149
- 6TC4100-10/50-2/D149
- 4TC40-10/D149
- 4TC100-10/D149



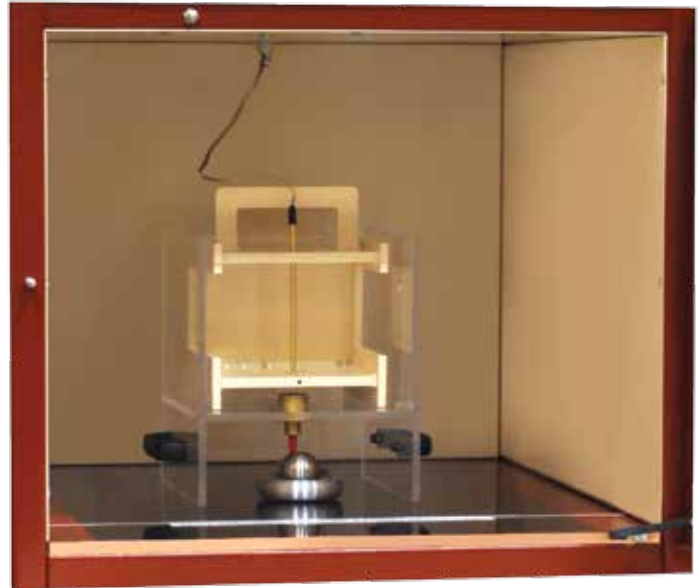
- Standard **output voltages** up to **100 kV AC and DC**
- **Rugged, mobile steel cabinet**
- **Integrated** test chamber

AC, 100 kV



Safety and Design Features

- Programmable Logic Controller and Operator Terminal utilized to control all aspects of test sequences
- Selectable automatic or manual operating modes
- Programmable rate of rise
- Over-voltage preset
- Peak-reading memory voltmeter
- Circuit breaker protection
- Test chamber with safety interlock, stress relief shielding, and transparent door
- Fast-acting as well as thermal overload protection
- Over-current trip point is adjustable from 10% to 110% of rated output current
- Rugged steel cabinet with durable painted finish
- Casters for ease of mobility
- Writing shelf on front of cabinet
- Fork lifting provisions
- Two copies of operation/maintenance manual

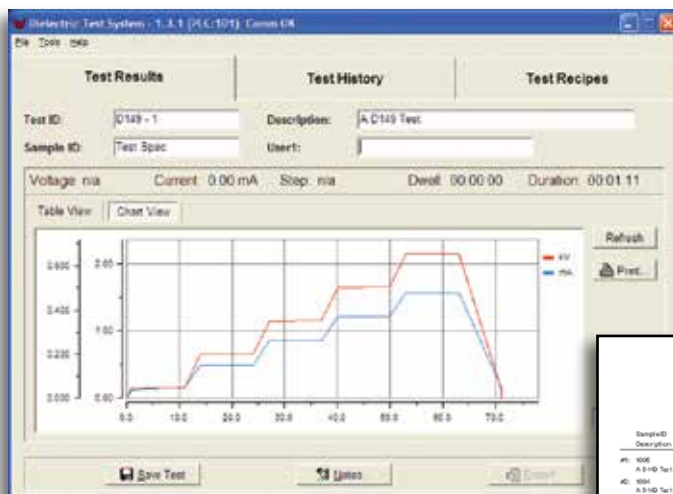


600C Series Controls

- Auto-ranging display of voltage and current. Accuracy of $\pm 0.8\%$ of reading + 0.2% of range +LSD.
- Failure memory voltmeter function
- Auto-voltage, over-voltage, and over-current setpoint
- Stop watch, duration, dwell timer functions
- Auto-step and auto-cycle functions
- Motorized regulator
- Variable ramp rate (desired rate of rise may be entered)
- Ethernet port
- Graphic display

Software Package

Specific test parameters can be entered or previous test files or "recipes" can be recalled for easy test duplication.



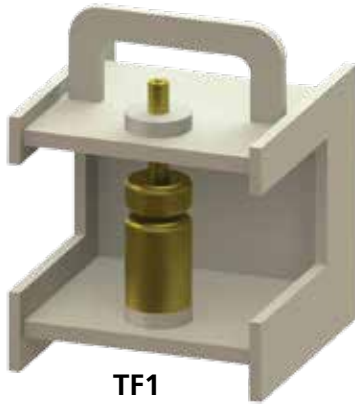
Phenix Technologies						
Industrial Drive						
Accident, MD, 21539						
(301) 748-6118						
Test No: 0149-1						
SampleID	Description	Date	Time	Result	Failure Voltage	Minimum Voltage, Current
#1: 000	A 9-140 Test	3/27/2012	10:12:00 AM	Test Complete	n/a	2100 V, 0.40 mA
#2: 000	A 9-140 Test	3/27/2012	10:13:00 AM	Test Complete	n/a	2100 V, 0.40 mA
#3: 000	A 9-140 Test	3/27/2012	10:10:00 AM	Test Complete	n/a	2150 V, 0.40 mA
#4: 000	A 9-140 Test	3/27/2012	10:08:17 AM	Test Complete	n/a	2100 V, 0.40 mA
#5: 000	A 9-140 Test	3/27/2012	10:06:30 AM	Test Complete	n/a	2100 V, 0.40 mA
					Avg:	2100.00, 0.40

Test results are graphically displayed to pin-point real-time voltage, current, dwell, and duration characteristics.

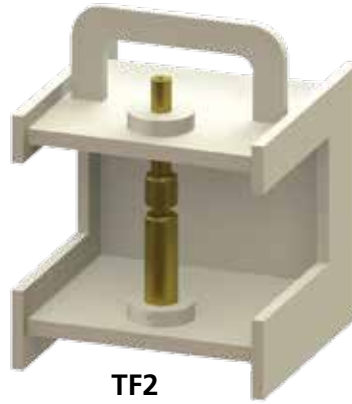
Results can be stored in a variety of configurations. (Computer is not included.)

Test Fixtures

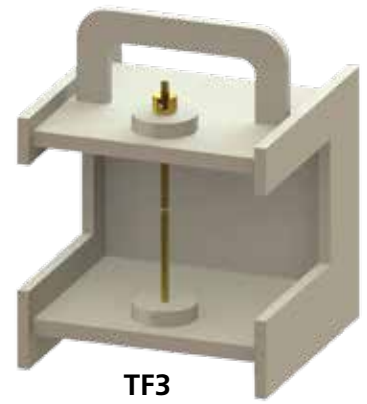
A wide variety of test fixtures with electrodes are available.



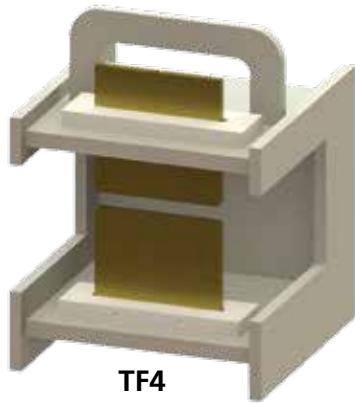
TF1



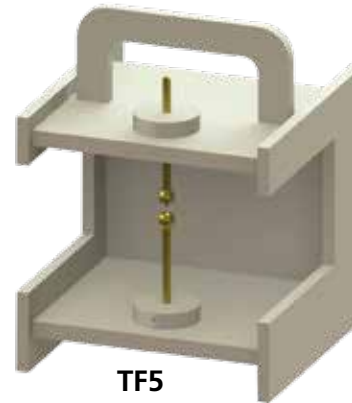
TF2



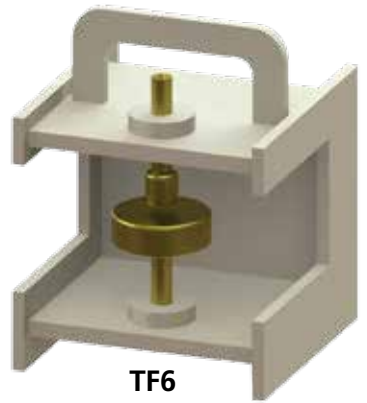
TF3



TF4



TF5



TF6

The most common are:

TF1 : Opposing cylinders 2" (51 mm) in diameter, 1" (25 mm) thick with edges rounded to 0.25" (6.44 mm) radius.

TF2 : Opposing cylinders 1" (25 mm) in diameter, 1" (25 mm) thick with (3.2 mm) radius.

TF3 : Opposing cylinder rods 0.25" (6.4 mm) in diameter, with edges rounded to 0.0313" (0.8 mm) radius.

TF4 : Flat plates 0.25" (6.4 mm) thick and 4.25" (108 mm) wide with edges square and ends rounded to 0.125" (3.2 mm) radius.

TF5 : Hemispherical electrodes 0.5" (12.7 mm) in diameter.

TF6 : Opposing cylinders: the lower one 3" (75 mm) in diameter, 0.6" (15 mm) thick; the upper one 1" (25 mm) in diameter, 1" (25 mm) thick; with edges of both rounded to 0.12" (3 mm) radius.



Options

- Non-heated oil bath for test fixtures
- Heated oil bath for test fixtures
- Combination AC/DC supplies or DC only units
- Ground Stick, 2-piece design, with a 25' (8 m) ground lead
- Discharge Stick (100 kV, 100 k Ω , 50 kJ), 2-piece design with a 25' (8m) ground lead

AC UNITS

MODEL		6CC20-0.8/D149	6CC50-2/D149	6CC100-5/D149	
INPUT	Voltage / Current	120 V, 12 A 230 V, 7 A	120 V, 23 A 230 V, 13 A	230 V, 25 A	
	Frequency	single phase 50 or 60 Hz (one must be specified)			
OUTPUT	Voltage / Current	≈0-20 kVAC, 40 mA ≈0-3 kVAC, 100 mA	≈0-50 kVAC, 40 mA ≈0-5 kVAC, 100 mA	≈0-100 kVAC, 50 mA ≈0-10 kVAC, 100 mA	
	DUTY CYCLES	for breakdown testing			
DIMENSIONS & WEIGHTS	Continuous	for breakdown testing			
	1 hr ON/1 hr Off	0.8 kVA	2.0 kVA	5.0 kVA	
DIMENSIONS & WEIGHTS	Overall	Length	52" (1321 mm)	52" (1321 mm)	62" (1575 mm)
		Width	30" (762 mm)	30" (762 mm)	35" (889 mm)
		Height	68" (1727 mm)	68" (1727 mm)	68" (1727 mm)
	Test Chamber	Weight	550 lbs (249 kgs)	600 lbs (272 kgs)	1050 lbs (476 kgs)
		Length	29" (737 mm)	29" (737 mm)	34" (864 mm)
		Width	26" (660 mm)	26" (660 mm)	31" (787 mm)
Height	22" (559 mm)	22" (559 mm)	22" (559 mm)		

AC/DC UNITS

MODEL		6TC4100-10/50-2/D149
INPUT	Voltage / Current	120 V, 25 A 230 V, 13 A
	Frequency	single phase 50 or 60 Hz (one must be specified)
OUTPUT	Voltage / Current	≈0-50 kVAC, 40 mA ≈0-100 kVDC, 10 mA
	DUTY CYCLES	for breakdown testing
DIMENSIONS & WEIGHTS	Continuous	for breakdown testing
	1 hr ON/1 hr Off	2.0 kVA
DIMENSIONS & WEIGHTS	Overall	consult factory

DC UNITS

MODEL		4TC40-10/D149	4TC100-10/D149
INPUT	Voltage / Current	120 V, 8 A 230 V, 5 A	120 V, 14 A 230 V, 8 A
	Frequency	single phase 50 or 60 Hz (one must be specified)	
OUTPUT	Voltage / Current	≈0-40 kVDC, 10 mA	≈0-100 kVDC, 10 mA
	DUTY CYCLES	for breakdown testing	
DIMENSIONS & WEIGHTS	Continuous	for breakdown testing	
	1 hr ON/1 hr Off	400 W	1000 W
DIMENSIONS & WEIGHTS	Overall	consult factory	consult factory



PHENIX TECHNOLOGIES

WORLD HEADQUARTERS

Phenix Technologies, Inc.
75 Speicher Drive
Accident, MD 21520 USA
Ph: +1.301.746.8118
Fx: +1.301.895.5570
Info@phenixtech.com

BRANCH OFFICES

Phenix Systems AG
Riehenstrasse 62A, 4058 Basel, Switzerland
Ph: +41.61.383.2770, Fx: +41.61.383.2771, Info@phenixsystems.com

Phenix Asia
Zhong Cheng Rd, Sec 1, No 177, 2F, Taipei 11148 Taiwan
Ph: +886.2.2835.9738, Fx: +886.2.2835.9879, Info@phenixasia.com

