

Transformer Turns Ratio Meter

Model PATTR-01D

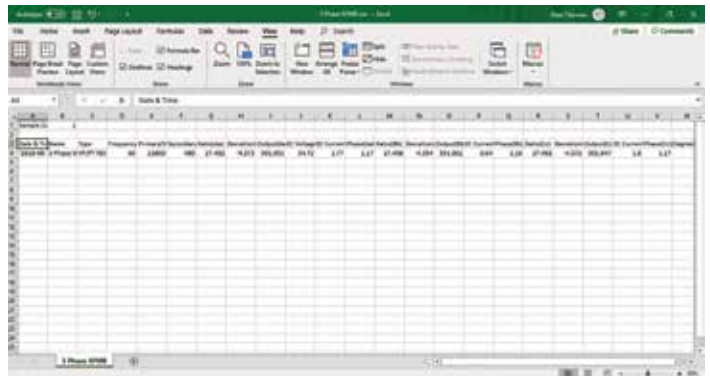
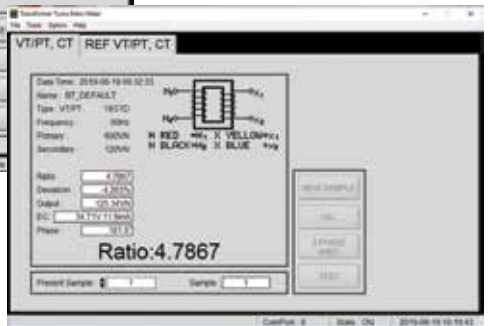
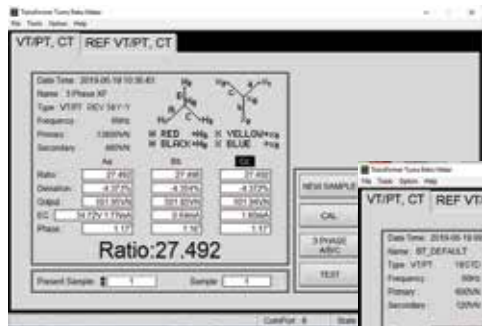


Testing Applications

- Measurements of 1-Phase and 3-Phase Transformer/VT/CT Turns Ratio
- VT/PT ratio 0.8~10000, CT ratio 0.8~2000
- High accuracy

Features

- Graphical and literal illustration of measurements and connections with large back-lighted Dot Matrix 240 x 128 LCD. Display test data with nameplate transformer values for easy interpretation.
- 10 Test Frequencies (50~400Hz).
- Display Turns Ratio, Deviation, Secondary Output, Excitation Voltage and Current, Phase Angle and Nameplate Transformer/VT/CT Values in one page for easy transformer quality interpretation.
- Check for Live Test Points, Short Circuit, Open Circuit, and Reverse Polarity before each measurement. Message is displayed to warn users (But, checking is not performed once measurement starts).
- Store 4096 files of transformer nameplate values (VT/PT/CT, 1Φ/3Φ, Test Frequency, Primary and Secondary Voltages or Ratio, RCF) and measuring data.
- 9 types of 3Φ Windings Connections preinstalled for easy user selection.
- Wireless Blue Tooth communication with PC.
- Select filter to remove field noise (Slow, Normal, Fast).
- Disable or Enable Auto-Power-Off with Programmable Time.
- Built-in calendar clock. Records with Date and Time Stamp.
- Powerful Lithium Battery (3400mAH) with built-in Charging Circuit.
- User Programmable RCF (Reference Correction Factor, 0.99~1.01) to correct accuracy within 1% error.
- Friendly file system for easy on-site Data Retrieval Nameplate Values Management.
- Export to .csv file.
- PC Application software included.



Specifications

Reference Conditions: 23°C ±5°C (30 to 50% RH) range.
 Add 25 ppm/°C for 0° to 18°C and 28° to 50°C to all accuracy specifications.
 No external electrical or magnetic fields.
 Output current ≤150 mA for VT/PT and ≤50 mA for CT.

| | | |
|-----------------------------------|--|--------------------------------|
| Ratio Range (VT/PT) | Autoranging: 0.8000 to 10000: 1 | |
| Accuracy (70Hz) | Ratio Range | Accuracy (% of Reading) |
| | 0.8000 ~ 999.99 | ± 0.1% |
| | 1000.0 ~ 4999.9 | ± 0.2% |
| | 5000.0 ~ 10000 | ± 0.25% |
| Ratio Range (CT) | Autoranging: 0.8000 to 2000.0 | |
| Accuracy (70Hz) | Ratio Range | Accuracy (% of Reading) |
| | 0.8000 to 2000.0 | ± 0.5% |
| Excitation Signal | VT/PT Mode: 34 Vrms max CT Mode: Auto Level 0 to1 A, 0.1 to 20 Vrms | |
| Excitation Current Display | Range: 0 to 1000 mA, Accuracy: ± (2% of Reading +2 mA) | |
| Excitation Frequency (Hz) | 50, 55, 60, 70, 100, 120, 200, 240, 300, 400 | |
| Display | 5" Large dot matrix LCD display (240*128) with backlight | |
| Power Source | Rechargeable Lithium Battery, 3400 mAh | |
| Battery Life | Over 10 hours of continuous operation. Battery life (%) indication | |
| Battery Charger | Universal input (90 to 264 Vrms input) 1.2 A, 50/60 Hz | |
| Charging Time | <4 hours | |
| Data Storage | 4096 Files Each (VTM, CTM, VTR, CTR, BMP) | |
| Date/ Time | Battery-backed, Real-time Calendar clock | |
| Measurement Method | ANSI / IEEE C57.12.90 and IEC 600076.1 | |
| Operation Environment | 5°C ~ 50°C, 85% RH | |
| Storage Environment | -20°C ~ 60°C, 75% RH | |
| Dimensions/Weight | 6"L x 2.5"W x 11"H (152 mm L x 64 mm W x 279 mm H); 3 lbs. (1.5 kgs) | |

Accessories

- Test leads (set of 2) 15' (4.5 m)
- Alligator clips (4), removable, banana jack connection
- Rechargeable lithium battery
- Software on USB stick & manual
- User manual
- AC adaptor
- Power cord 11' (3.4 m)
- Nylon carrying bag



PHENIX
TECHNOLOGIES

WORLD HEADQUARTERS

Phenix Technologies, Inc.
 75 Speicher Drive
 Accident, MD 21520 USA
 Ph: +1.301.746.8118
 Fx: +1.301.895.5570
 Info@phenixtech.com

BRANCH OFFICES

Phenix Systems AG
 Riehenstrasse 62A, 4058 Basel, Switzerland
 Ph: +41.61.383.2770, Info@phenixsystems.com

Phenix Asia
 Zhong Cheng Rd, Sec 1, No 177, 2F, Taipei 11148 Taiwan
 Ph: +886.2.2835.9738, Fx: +886.2.2835.9879, Info@phenixasia.com

ISO
9001:2008
Compliant

